

Системы логистики для стеллажей FIFO WERMA StockSAVER

Технические характеристики



Архангельск (8182)63-90-72
Астана (7172)727-132
Астрахань (8512)99-46-04
Барнаул (3852)73-04-60
Белгород (4722)40-23-64
Брянск (4832)59-03-52
Владивосток (423)249-28-31
Волгоград (844)278-03-48
Вологда (8172)26-41-59
Воронеж (473)204-51-73
Екатеринбург (343)384-55-89
Иваново (4932)77-34-06

Ижевск (3412)26-03-58
Иркутск (395)279-98-46
Казань (843)206-01-48
Калининград (4012)72-03-81
Калуга (4842)92-23-67
Кемерово (3842)65-04-62
Киров (8332)68-02-04
Краснодар (861)203-40-90
Красноярск (391)204-63-61
Курск (4712)77-13-04
Липецк (4742)52-20-81
Россия (495)268-04-70

Магнитогорск (3519)55-03-13
Москва (495)268-04-70
Мурманск (8152)59-64-93
Набережные Челны (8552)20-53-41
Нижний Новгород (831)429-08-12
Новокузнецк (3843)20-46-81
Новосибирск (383)227-86-73
Омск (3812)21-46-40
Орел (4862)44-53-42
Оренбург (3532)37-68-04
Пенза (8412)22-31-16
Киргизия (996)312-96-26-47

Пермь (342)205-81-47
Ростов-на-Дону (863)308-18-15
Рязань (4912)46-61-64
Самара (846)206-03-16
Санкт-Петербург (812)309-46-40
Саратов (845)249-38-78
Севастополь (8692)22-31-93
Симферополь (3652)67-13-56
Смоленск (4812)29-41-54
Сочи (862)225-72-31
Ставрополь (8652)20-65-13
Казахстан (772)734-952-31

Сургут (3462)77-98-35
Тверь (4822)63-31-35
Томск (3822)98-41-53
Тула (4872)74-02-29
Тюмень (3452)66-21-18
Ульяновск (8422)24-23-59
Уфа (347)229-48-12
Хабаровск (4212)92-98-04
Челябинск (351)202-03-61
Череповец (8202)49-02-64
Ярославль (4852)69-52-93

Единый адрес для всех регионов: wme@nt-rt.ru | | www.werma.nt-rt.ru

StockSAVER

Your Benefits

StockSAVER enables automated material requisition for production logistics. StockSAVER is a simple retrofit solution for all FIFO gravity flow racks. It solves all of the typical kanban problems, rules out human error and eliminates the previous requirement for maintaining safety stock. In this way, StockSAVER makes third-generation kanban a reality. Sensors in the FIFO rack register the number of containers and transmit this information to the StockSAVER software via a wireless network – for complete transparency regarding all of the material stock at the workstations.

- Improve your cash flow: Reduce stock levels, eliminate fear-related stockpiling, and get your safety stock under control, even with a diverse range of items.
- Reduce errors: Prevent previous kanban errors (e.g. lost kanban cards), dispense with scanning processes, eliminate double postings and respond flexibly in real time.

Typical applications

- The control station provides complete transparency regarding material stocks in the FIFO gravity flow racks.
- When a container is removed, the requirements list automatically ensures the timely reorder of materials.
- The evaluation of material outflow provides the perfect tool for making long-term process improvements.
- Data export, via the interfaces, allows full integration for downstream procurement processes and for integration into the system landscape.

Initial startup

- Install sensors and sensor boxes in the storage bay.
- Set up SmartBOX for wireless transmission per rack.
- Install transceiver to receive all wireless data.
- Set up the software.

Features

- Tried-and-tested, robust wireless network for the production environment
- Licence-free software included
- Automatically generated requirements list for the material supply
- User-friendly control station
- Optional: Place-by-Light



StockSAVER: THE THIRD-GENERATION KANBAN SYSTEM

First generation Kanban systems: Kanban cards

Problems: delays in handing over cards, cards are mislaid or are not collected, little transparency.

Second generation Kanban systems: Use of scanners

Problems: disruptions due to incorrect bookings, forgetting to scan, incorrect stock replenishment, etc. → the digital system world does not correspond with reality.

Third generation Kanban systems:



- Intelligent sensors determine the actual material stock levels present in the rack.
- Human errors are eliminated and the familiar Kanban problems are resolved (lack of stock is not recognised in good time, Kanban cards cannot go missing etc.).
- This makes it possible to reduce the stock level in the FIFO rack.

REDUCE YOUR STOCK LEVELS WITH StockSAVER

- Prevents possibility of stock running out
- Save space by not having to carry excessive emergency stocks
- Reduce safety stocks, even with a wide variety of parts



StockSAVER PROVIDES A LOW MARGIN FOR ERROR

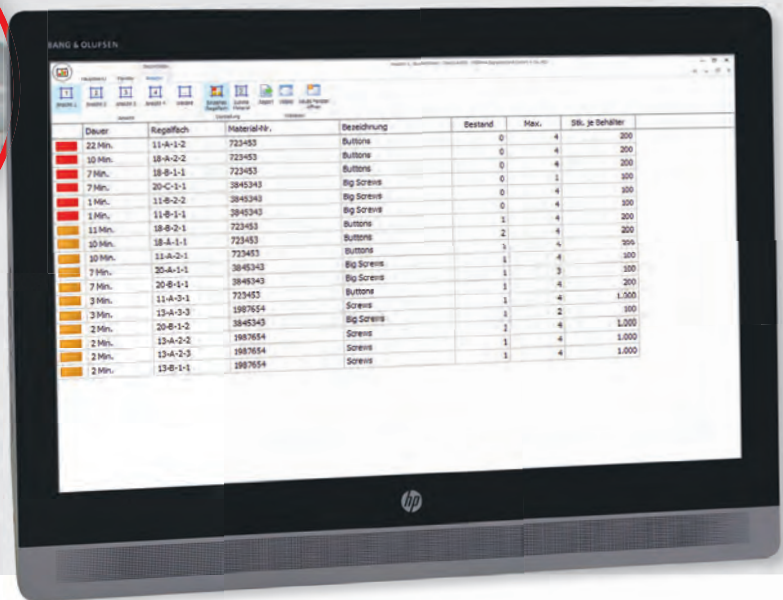
- No need for additional scan processes
- No more double entry bookings
- See the actual stock level in real time
- Eliminate arithmetically calculated stock levels as a source of error

SIGNIFICANTLY REDUCE YOUR FIFO FLOW RACK SPACE WITH StockSAVER

- More space at the production line or on the shop-floor for value adding activities

RESULT

Safely reduce the stock levels held on the FIFO rack and thereby improve your cash-flow.



The clearly structured, digital Kanban board (material requirements list) allows material to be replenished in good time.



SENSORS

Detect the number of bins and transfer this data to the SensorBOX.

SensorBOX

Receives the sensor status of up to 4 bins per shelf location and transfers this data to the SmartBOX.

SmartBOX

Receives the data from the SensorBOXES and transmits this to the Transceiver via a wireless network. **OPTIONAL:** If the universal interface is used (e.g. RFID or barcode scanner), the SmartBOX gives an immediate warning, on site, of misplaced items and requests a correction.

THE SYSTEM

The fully configured kits for your storage bays are delivered ready for immediate installation. **StockSAVER** is **maintenance-free, easy to retrofit** and **monitors the stock levels** of your FIFO flow racks as a signal point in the logistics chain. The data is transmitted wirelessly and displayed in the software, which is supplied with the package. You will also profit from the long-term benefits of the analysis module, which can help you to **improve your processes**. The **material movement data export** provides the opportunity to optimise the replenishment process.



SENSOR



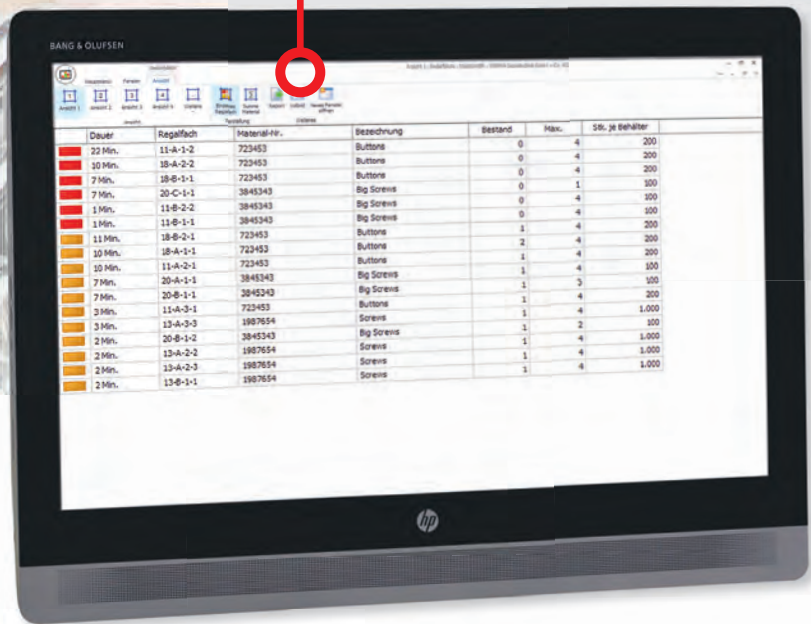


TRANSCIEVER

Receives the status of the SmartBOXES and transfers this data to the StockSAVER software.

SOFTWARE

Provides complete transparency over all of the networked FIFO flow racks at a glance.



The digital Kanban board (material requirements list) indicates the locations which require replenishment.



SensorBOX



SmartBOX



TRANSCIEVER



INTUITIVE AND CLEARLY STRUCTURED – THE StockSAVER SOFTWARE

The **software supplied with the system** can be installed quickly and easily, and will guide you through the process of creating your own network, step by step. The material stocks of the **FIFO flow racks** that are integrated into the network are displayed on your PC. This gives you a **transparent overview of the material available** at the workstation. The **requirements list** informs the logistics department promptly of replenishment requirements and their priority. The analysis module helps you to **improve your processes in the long term**.

ALWAYS INFORMED AND LEAN

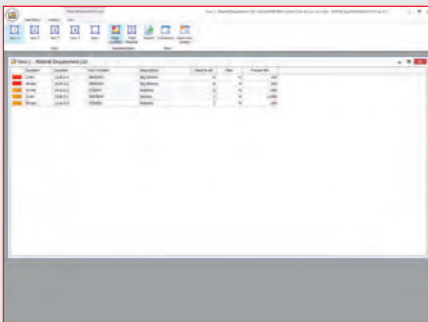
The control station view keeps you informed all of the time by giving you information about the level of stock held at the workstation.

The material requirements list makes the collection of Kanban cards unnecessary as the logistics department will automatically receive „to do“ lists. In this way human error can be avoided, the replenishment process can be speeded up and high levels of safety stock made unnecessary.



GET TRANSPARENCY CONTROL STATION

This is where you can obtain transparency and a complete overview at a glance. The digital version of your FIFO flow racks at the work station displays current stock levels and makes safety stock unnecessary. This means you can save space on racking and use it instead for other value adding activities.

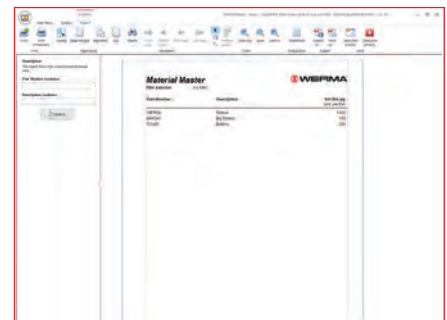


GUARANTEE REPLENISHMENT REQUIREMENTS LIST

If the removal of a bin triggers the re-order level, then the requirements list for the logistics department will be automatically updated. This ensures a prompt, efficient and priority-driven replenishment process. Manual sources of error (such as mislaid Kanban cards and failing to register a replenishment requirement) become a thing of the past.

IMPROVE PROCESSES ANALYSIS

The ideal tool to make long-term process improvements. Whether it is the identification of spikes in demand, selecting the optimum bin size or simply identifying how often a stock location is being replenished, the function will provide all of this at the touch of a button.

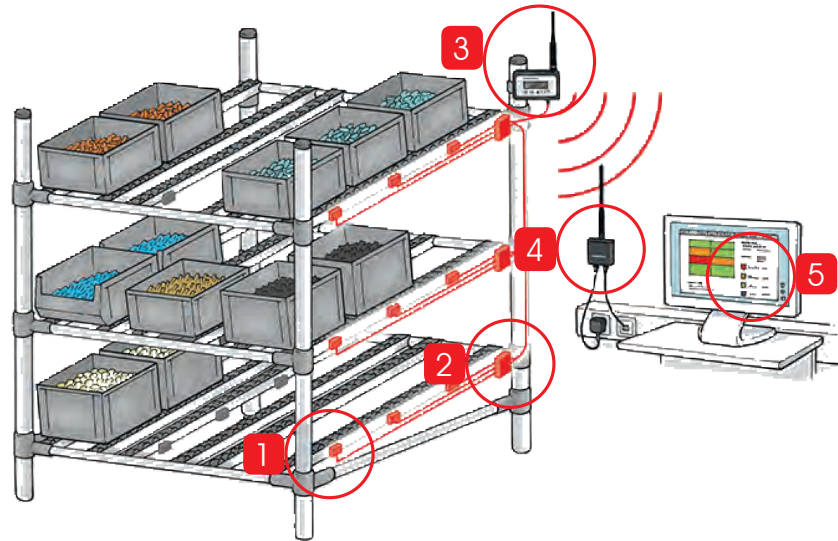


MATERIAL MOVEMENT DATA EXPORT INTERFACE FOR DOWNSTREAM PROCUREMENT PROCESSES

Material movement data can be exported and used, for example, to trigger production orders, external procurement processes or make material bookings. This provides the option of an interface with your ERP system.



StockSAVER



1
Sensor



2
SensorBOX



3
SmartBOX



4
Transceiver



5
Software



StockSAVER - Kits and Part numbers

① ORDER SPECIFICATIONS:		
Starter Kit 50/2	865 000 01	Kit with Transceiver for 50 locations with 2 sensors per location (including software). Contains: 1x Transceiver, 1x SmartBOX, 50 x SensorBOXes, 100 x Sensors
Starter Kit 50/4	865 000 02	Kit with Transceiver for 50 locations with 4 sensors per location (including software). Contains: 1x Transceiver, 1x SmartBOX, 50 x SensorBOXes, 200 x Sensors
Extension Kit 50/2	865 000 03	Kit without Transceiver for 50 locations with 2 sensors per location (including software). Contains: 1x SmartBOX, 50 x SensorBOXes, 100 x Sensors
Extension Kit 50/4	865 000 04	Kit without Transceiver for 50 locations with 4 sensors per location (including software). Contains: 1x SmartBOX, 50 x SensorBOXes, 200 x Sensors
Tool Kit	865 000 29	Tool kit contains: 1x Parallel-action pliers 1x Automatic wire-stripper for BUS cable 1x Automatic wire-stripper for Sensor cable
Extension Set	865 000 30	Extension set to extend sensor cables when re-configuring locations, Contains: 30 x sensor connectors, 15 x sensor couplers
Sensor Cable for Extension Set	865 000 33	30 m
Place by Light	865 000 34	Kit includes: 25 Lights with corresponding connectors and installation material



Starter Kit 50/2



Архангельск (8182)63-90-72	Ижевск (3412)26-03-58	Магнитогорск (3519)55-03-13	Пермь (342)205-81-47	Сургут (3462)77-98-35
Астана (7172)727-132	Иркутск (395)279-98-46	Москва (495)268-04-70	Ростов-на-Дону (863)308-18-15	Тверь (4822)63-31-35
Астрахань (8512)99-46-04	Казань (843)206-01-48	Мурманск (8152)59-64-93	Рязань (4912)46-61-64	Томск (3822)98-41-53
Барнаул (3852)73-04-60	Калининград (4012)72-03-81	Набережные Челны (8552)20-53-41	Самара (846)206-03-16	Тула (4872)74-02-29
Белгород (4722)40-23-64	Калуга (4842)92-23-67	Нижний Новгород (831)429-08-12	Санкт-Петербург (812)309-46-40	Тюмень (3452)66-21-18
Брянск (4832)59-03-52	Кемерово (3842)65-04-62	Новокузнецк (3843)20-46-81	Саратов (845)249-38-78	Ульяновск (8422)24-23-59
Владивосток (423)249-28-31	Киров (8332)68-02-04	Новосибирск (383)227-86-73	Севастополь (8692)22-31-93	Уфа (347)229-48-12
Волгоград (844)278-03-48	Краснодар (861)203-40-90	Омск (3812)21-46-40	Симферополь (3652)67-13-56	Хабаровск (4212)92-98-04
Вологда (8172)26-41-59	Красноярск (391)204-63-61	Орел (4862)44-53-42	Смоленск (4812)29-41-54	Челябинск (351)202-03-61
Воронеж (473)204-51-73	Курск (4712)77-13-04	Оренбург (3532)37-68-04	Сочи (862)225-72-31	Череповец (8202)49-02-64
Екатеринбург (343)384-55-89	Липецк (4742)52-20-81	Пенза (8412)22-31-16	Ставрополь (8652)20-65-13	Ярославль (4852)69-52-93
Иваново (4932)77-34-06	Россия (495)268-04-70	Киргизия (996)312-96-26-47	Казахстан (772)734-952-31	

Единый адрес для всех регионов: wme@nt-rt.ru | www.wema.nt-rt.ru